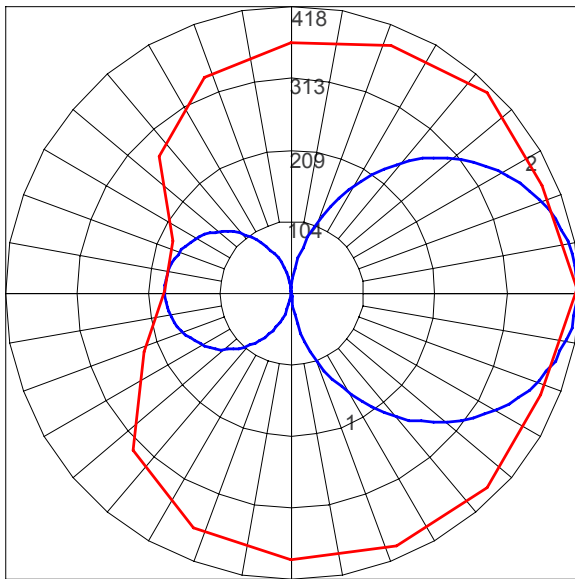




LAMP DESCRIPTIONS

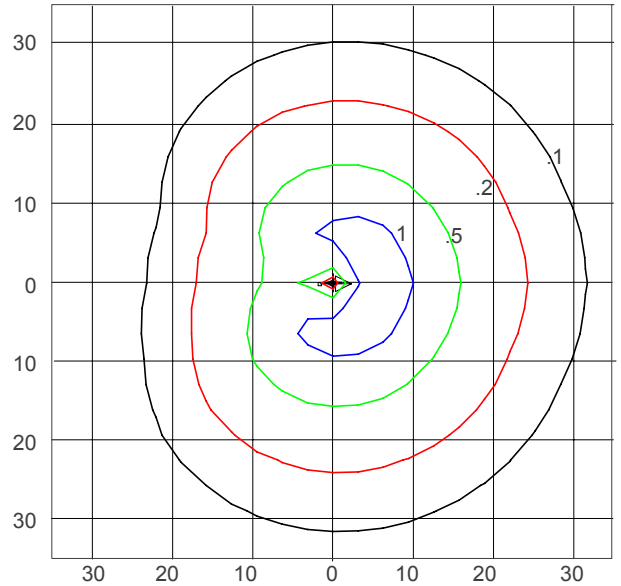
LAMP	DESCRIPTION	LUMINAIRE LUMENS*	B.U.G. RATING	STARTING TEMPERATURE °C
3000K LED	40W custom LED light engine	3197	B1-U5-G2	-30
4000K LED	40W custom LED light engine	3197	B1-U5-G2	-30

POLAR CANDELA PLOT (40W LED, 3000K/4000K)



Maximum Candela = 417.9.45; Located at Horizontal Angle = 0; Vertical Angle = 92.5
 #1 - Vertical Plane Through Horizontal Angles (0 - 180) (Through Max. Cd.)
 #2 - Horizontal Cone Through Vertical Angle (92.5) (Through Max Cd.)

ISOFOOTCANDLE PLOT (40W LED, 3000K/4000K)



Isofootcandle Plot shows light distribution pattern at ground level with custom LED light engine. Readings have been taken assuming the photometric center of the luminaire to be 9.38 feet above ground level. IES files for standard lamps are available on our website.